

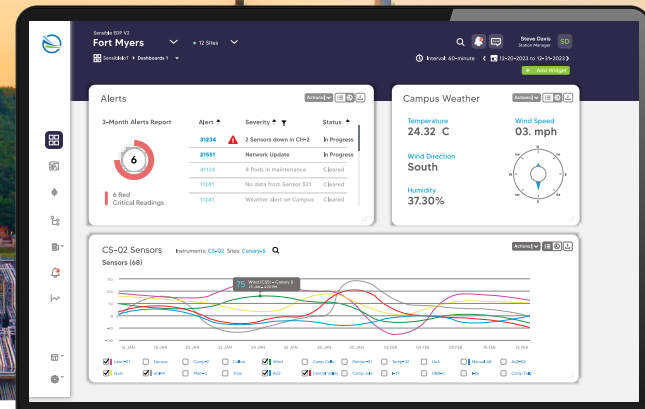
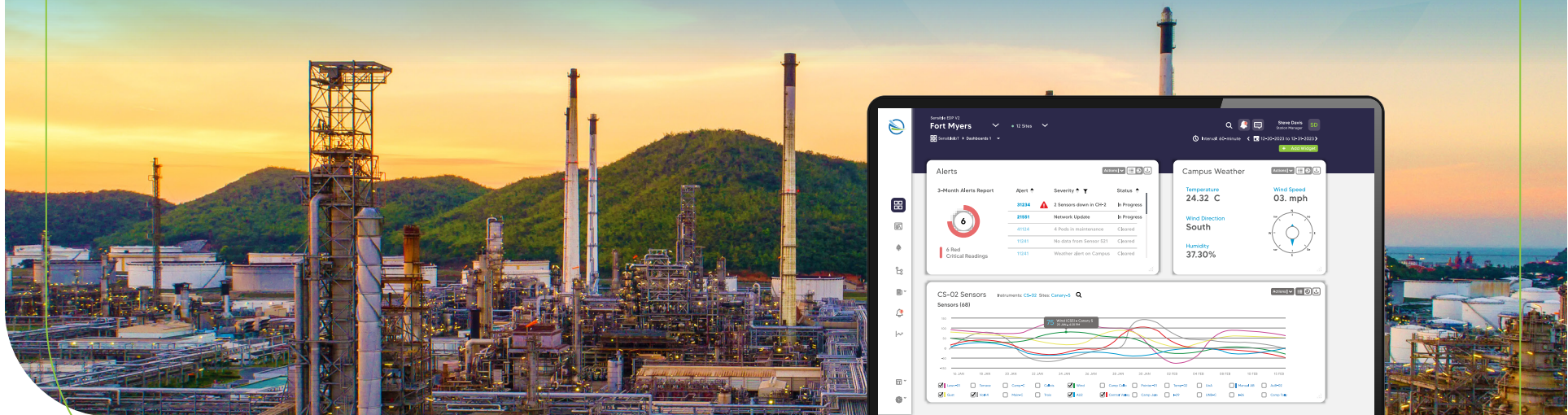


The future of real-time environmental data monitoring

Real-Time Fenceline Monitoring

Real Time Fenceline Monitoring

Fenceline Monitoring (FLM) is a pivotal practice in verifying and reducing fugitive emissions from industrial facilities. Whether it's real time data collected to meet regulatory requirements, support a consent decree, or for a fenceline program, companies need to stay ahead of evolving regulations while ensuring compliance and environmental responsibility. With a range of tools—from precise point measurements to expansive open-path systems, various advanced technologies and methodologies can provide real time actionable data while also remaining cost-efficient. By doing so, companies can reduce their environmental impact and contribute to a greener future.



Establishing an Effective Fenceline Monitoring Program

To set up an effective fenceline monitoring program, consider the following essential elements:

- **Know Your Compounds:** Identify the specific compounds of interest and their required detection limits.
- **Compliance or Engineering:** Decide whether your monitoring is compliance-driven or based on engineering discretion.
- **Site Planning:** Enhance your current solution to include real-time emissions monitoring and source locations.
- **Site-Specific Monitoring Plan (SSMP):** Evaluate if an SSMP is applicable.
- **Monitoring Station Installation:** Properly install and name monitoring stations with specially designed shelter housings.
- **Meteorological Data:** Use an onsite meteorological station (MET)

Addressing Fugitive Emissions

Addressing fugitive emissions requires a holistic approach—combining technology, processes, and organizational commitment. Unlike emissions from smokestacks or tailpipes (which can be managed using existing technologies), fugitive emissions pose a challenge because they are often from industrial processes or equipment leaks within facilities such as refineries, chemical plants, and energy production sites. Equally as challenging is that these emissions are difficult to identify, measure, and track due to their diverse composition, including various volatile organic compounds (VOCs).

Advanced Monitoring & Project Services for Fenceline Monitoring

Integrating advanced monitoring technologies into your fenceline program can provide more comprehensive and timely data, improving overall effectiveness. Sensible Environmental Data Platform (EDP) offers comprehensive support throughout the project lifecycle. Our Project Services include Monitoring Program Design, Development of Monitoring Plans, Installation, Operations and Maintenance, Data Acquisition and Management, and Alert Response. A real-time understanding of your fenceline emissions is critical to community safety. Sensible EDP combines our Project Services team's expertise, with real-time monitoring software, and the ability to integrate third-party data and hardware to address your specific needs. The outcome is a proactive, data-driven approach that enables rapid responses to pressing issues.



Sensible EDP combines our Project Services team's expertise with real-time monitoring software and the ability to integrate third-party data and hardware to address your specific needs.

Our technologies and project services include:



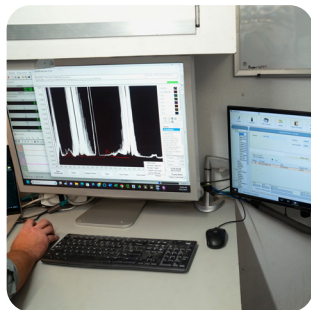
Open Path Technologies:

These laser-based systems measure emissions over a path, offering real-time data and broader coverage than point sampling. Montrose installs open-path monitors using UV-DOAS, OP-FTIR, and OP-TDL/QCL, covering up to 1 km and meeting regulations like SCAQMD Rule 1180 and Colorado House Bill 1189.



Drones:

Unmanned aerial vehicles equipped with gas sensors can fly over the fenceline area, collecting data from different angles.



Point Measurements:

Montrose provides cutting-edge point measurement solutions, including Gas Chromatography with various detectors and advanced sensing techniques using optical, infrared, and TDL sensors.



Real-Time Sensors:

Deploy real-time sensors strategically around the perimeter to continuously monitor air quality. These sensors can detect various pollutants, including volatile organic compounds (VOCs) and hazardous air pollutants (HAPs).



Mobile Solutions:

Our mobile solutions, including drones and the PTR-TOF-MS based van, provide broad, real-time detection and tracking of emissions, facilitating immediate response and flexible monitoring capabilities for both fenceline and facility.



Sensible EDP:

Sensible EDP integrates with nearly any air, water, and soil sensor, giving your organization a central monitoring point for all of your environmental data in a single platform, no matter the pollutant.



Why Choose Sensible EDP for Fenceline Monitoring?

- **Ability to utilize diverse real time monitoring**, including point measurements, open-path systems, and mobile solutions.
- **Centralize all monitoring data** with Sensible EDP’s advanced data management platform, enhancing visibility and control.
- **Utilize a wide range of sensor and hardware options** to detect and monitor regulated air pollutants effectively.
- **Stay compliant with increasing regulatory standards** and reduce risks associated with emissions.
- **Receive instant notifications of detected emissions** from diverse sources through email, text, and other mobile devices, allowing for quick response and mitigation.

Enhance Operations & Ensure Compliance with Sensible EDP’s Advanced Fenceline Monitoring Solutions

Get Started with Sensible EDP

Sensible EDP offers comprehensive fenceline monitoring solutions tailored to meet evolving regulatory requirements. Our services support your ESG reporting and air toxics reduction efforts with reliable, quantifiable data. Using proprietary stand-alone software and triangulation techniques, we enable early detection and source identification of potential emissions. This proactive approach allows for rapid response, effective mitigation, and significant emissions reductions.

Ensure your facility remains compliant and proactive with Sensible EDP’s advanced fenceline monitoring solutions.

For more information, contact us at info@sensible-edp.com or visit our website to schedule a demo.

